

5 OUTBOARD
YEARS
warranty

FOR LEISURE USE ONLY
Subject to terms and conditions
see your Dealer for more
information



INFLATABLE BOATS WITH OUTBOARD MOTOR



**Evolution
Line**

Sport Line

**Endeavour
Line**

**Professional
Line**

**Luxury Tender
Line**



FOLLOW US ON
SELVA MARINE



5 OUTBOARD
YEARS
warranty

FOR LEISURE USE ONLY
Subject to terms and conditions
see your Dealer for more
information

Selva Marine engines come with a five-year limited warranty. Certain conditions and exclusions apply including professional and commercial use.



These inflatable boats in a 'package format' with exclusive **Selva Marine** outboard motors come in 13 lengths from 4.7 to 9,6 meters and allow users to enjoy the sea freely and safely. The entire boat project design, strict

testing regime and production technology are aimed at achieving the best choice and offering the latest generation new concept marine products.

RESTYLING



Max length (cm)	Max beam (cm)	Dry weight (kg)	People carrying capacity
960	342	1900	18

Model
D.960

NEW



Model
D.900

Max length (cm)	Max beam (cm)	Dry weight (kg)	People carrying capacity
890	305	1440	14

RESTYLING



Max length (cm)	Max beam (cm)	Dry weight (kg)	People carrying capacity
799	300	1230	18

Model
D.800



Model
D.750

Max length (cm)	Max beam (cm)	Dry weight (kg)	People carrying capacity
740	290	950	14



Max length (cm)	Max beam (cm)	Dry weight (kg)	People carrying capacity
675	269	600	12

Model
D.700 SPECIAL



Model
D.650 SPECIAL FAMILY

Max length (cm)	Max beam (cm)	Dry weight (kg)	People carrying capacity
650	260	580	12



FAMILY AREA AT STERN

The aft deck easily converts into a comfortable 'U'-shape sofa to create practical room as a large sunbed or where a large table can be fitted for leisurely meals.



Model
D.650 DS SPECIAL

Max length (cm)	Max beam (cm)	Dry weight (kg)	People carrying capacity
650	260	590	12



Max length (cm)	Max beam (cm)	Dry weight (kg)	People carrying capacity
599	263	480	10

Model
D.600 SPECIAL



Model
D.600 DS

Max length (cm)	Max beam (cm)	Dry weight (kg)	People carrying capacity
599	263	500	10



Max length (cm)	Max beam (cm)	Dry weight (kg)	People carrying capacity
570	255	400	9

Model
D.570



Model
D.540

Max length (cm)	Max beam (cm)	Dry weight (kg)	People carrying capacity
535	243	340	8



Max length (cm)	Max beam (cm)	Dry weight (kg)	People carrying capacity
502	235	305	8

Model
D.500



Model
D.470

Max length (cm)	Max beam (cm)	Dry weight (kg)	People carrying capacity
474	236	250	7



Version with **BLACK TUBES**

Max length (cm)	Max beam (cm)	Dry weight (kg)	People carrying capacity
535	243	340	8

Model
D.540

Model	D.960	D.900	D.800	D.750	D.700	D.650 D.S.	D.650 FAMILY	D.600 D.S.	D.600	D.570	D.540	D.500	D.470
Max length (cm)	960	890	799	740	675	650	650	599	599	570	535	502	474
Internal length (cm)	900	840	700	638	613	605	605	550	550	480	459	417	402
Max width (cm)	343	305	300	290	269	260	260	263	263	255	243	235	236
Internal width (cm)	209	250	175	164	145	145	145	143	143	131	121	121	117
Construction height (cm)	114	112	104	102	92	92	92	92	92	80	80	80	80
Tube diameter (cm)	57÷67	42÷66	45÷66	50÷63	50÷60	50÷60	50÷60	50÷60	50÷60	50÷62	50÷62	51÷57	51÷57
Motor shaft version	1 UL o 2 XL	1 UL o 2 XL	1 UL o 2 XL	1 UL o 2 XL	1 XL	1 XL	1 XL	1 L	1 L	1 L	1 L	1 L	1 L
Number of compartments	7	6	6	6	5	5	5	5	5	5	5	5	5
Number of lockers	7	7	7	7	7	5	6	4	6	5	5	4	4
Dry weight ex motor, fittings, liquids (kg)	1900	1440	1230	950	600	590	580	500	480	400	340	305	250
People carrying capacity	18	14	18	14	12	12	12	10	10	9	8	8	7
Max carrying load (kg) (people, standard equipment, engine)	2180	1910	2220	1760	1380	1480	1480	1150	1150	1060	900	900	780
Inflation pressure (atm)	0,2	0,2	0,2	0,2	0,2	0,2	0,2	0,2	0,2	0,2	0,2	0,2	0,2
Max applicable power (kW/hp)	441 (600)	2 x 221 (2 x 300)	295 (400)	184 (250)	148 (200)	129 (175)	129 (175)	126 (171)	126 (171)	100 (136)	85 (115)	66 (90)	60 (80)
Recommended power (min/max hp)	2 x 250	2 x 150 / 2 x 250	250	150 / 250	115 / 150	115 / 150	115 / 150	80 / 115	80 / 115	70 / 115	60 / 100	50 / 80	40 / 70
Hull type	Deep-V with rest skids												
Hull material	GRP = double moulded												
Internal hull colour	White												
External hull colour	White												
Fabric	NEOPRENE - HYPALON, 1500 g/mq					NEOPRENE - HYPALON, 1300 g/mq							
EC standard design category	B	B	C	C	C	C	C	C	C	C	C	C	C

For information on engines in packages with **Evolution Line** boats please see the **Selva** outboard engine catalogue.

The data in this table are to be considered as approximate and **Selva Marine** reserves the right to modify the technical characteristics, materials, construction, weights, colours, graphics etc. without any forewarning or obligation.

The specifications given in this table are determined in accordance with regulations in force at the time of preparation of the catalogue and may have to be modified. Please request confirmation of the data at time of purchase.

EQUIPMENT



Model	D.960		D.900		D.800		D.750		D.700		D.650 D.S.		D.650 Family		D.600 D.S.		D.600		D.570		D.540	D.500	D.470
	Evolution	Evolution Special	Evolution	Evolution Special	Evolution	Evolution Special	Evolution	Evolution Special	Evolution	Evolution Special	Evolution	Evolution Special	Evolution	Evolution Special	Evolution	Evolution Special	Evolution	Evolution Special	Evolution	Evolution Special	Evolution	Evolution	Evolution
Twin colour tube – white/black carbon	N	S	N	S	N	S	N	S	N	S	N	S	N	S	N	S	N	S	N	S	N	N	N
Handrail in fabric on tubes	N	S	N	S	N	S	N	S	N	S	N	S	N	S	N	S	N	S	N	S	N	N	N
Pair of paddles	S	S	S	S	S	S	S	S	S	S	S	S	S	S	S	S	S	S	S	S	S	S	S
Inflating pump	S	S	S	S	S	S	S	S	S	S	S	S	S	S	S	S	S	S	S	S	S	S	S
Motor installation	S	S	S	S	S	S	S	S	S	S	S	S	S	S	S	S	S	S	S	S	S	S	S
Complete electrical system	S	S	S	S	S	S	S	S	S	S	S	S	S	S	S	S	S	S	S	S	S	S	S
Complete console ⁽¹⁾	S	S	S	S	S	S	S	S	S	S	S	S	S	S	S	S	S	S	S	S	S	S	S
Cabin under console	S	S	S	S	S	S	S	S	N	N	N	N	N	N	N	N	N	N	N	N	N	N	N
Steering wheel in “special” style	N	S	N	S	N	S	N	S	N	S	N	S	N	S	N	S	N	S	N	S	N	N	N
Helm seat ⁽²⁾	N	N	N	N	N	N	N	N	N	N	N	N	N	N	N	N	N	N	N	N	S	S	S
Roller support for semi-erect driving with stainless steel frame	N	N	N	N	N	N	N	N	N	N	N	N	N	N	S	S	N	N	N	N	N	N	N
Multi-purpose driving seat ⁽³⁾	S	S	S	S	S	S	S	S	S	S	S	S	S	S	N	N	S	S	S	S	N	N	N
Engine instrumentation	S	S	S	S	S	S	S	S	S	S	S	S	S	S	S	S	S	S	S	S	S	S	S/N
Instrument panel with carbon look	N	S	N	S	N	S	N	S	N	S	N	S	N	S	N	S	N	S	N	S	N	N	N
Switches panel with switches	S	S	S	S	S	S	S	S	S	S	N	N	N	N	N	N	N	N	N	N	N	N	N
Stern couch	S	S	S	S	S	S	S	S	S	S	N	N	S	S	N	N	S	S	S	S	N	N	N
Stern sofa converts for sunbathing or to stretched legs seat	N	N	N	N	N	N	N	N	N	N	S	S	N	N	S	S	N	N	N	N	N	N	N
Bow sundeck cushions	S	S	S	S	S	S	S	S	S	S	S	S	S	S	S	S	S	S	S	S	S	S	S
Cushion for bow stern extension	N	N	N	N	N	N	N	N	S	S	S	S	S	S	S	S	S	S	S	S	S	S	S
Cushion for bow sundeck extension	N	N	N	N	N	N	N	N	S	S	S	S	S	S	S	S	S	S	S	S	S	S	S
Cushion for stern extension	O	O	O	O	O	O	O	O	N	N	N	N	S	S	N	N	N	N	N	N	N	N	N
Cushions in “special” double colour	N	S	N	S	N	S	N	S	N	S	N	S	N	S	N	S	N	S	N	S	N	N	N
Foldable stainless steel ladder	N	N	N	N	N	N	N	O	O	O	O	O	O	O	O	O	O	O	O	O	O	O	O
Stern platforms in GRP with stainless steel ladder	S	S	O	S	O	S	O	S	O	S	O	S	O	S	O	S	O	S	O	S	O	N	N
Auxiliary motor support	N	N	O/N	O/N	O/N	O/N	O/N	O/N	O	O	O	O	O	O	O	O	O	O	O	O	O	O	O
Sun awning	O	O	O	O	O	O	O	O	O	O	O	O	O	O	O	O	O	O	O	O	O	O	O
“Twin-tube” stainless steel, telescopic, tilt-up rollbar with start lights and horn	N	N	N	N	N	N	O	O	O	O	O	O	O	O	O	O	O	O	O	O	O	O	O
Rollbar in GRP with navigation lights and horn	O	S	O	S	O	S	N	N	N	N	N	N	N	N	N	N	N	N	N	N	N	N	N
Mooring cover	O	O	O	O	O	O	O	O	O	O	O	O	O	O	O	O	O	O	O	O	O	O	O
Built-in fuel tank installed in compliance with CE regulations with blower, delivery pipe with water/fuel separating filters and solenoid valves, filling pipe, breather pipe and fuel level gauge	S - 550 lt.	S - 550 lt.	S - 347 lt.	S - 347 lt.	S - 347 lt.	S - 347 lt.	S - 300 lt.	S - 300 lt.	S - 200 lt.	S - 200 lt.	S - 175 lt.	S - 175 lt.	S - 175 lt.	S - 175 lt.	S - 135 lt.	S - 135 lt.	S - 135 lt.	S - 135 lt.	O - 90 lt.	S - 90 lt.	O - 90 lt.	N	N
Built in fibreglass fresh water tank with fitting for shower	S - 80 lt.	S - 80 lt.	S - 80 lt.	S - 80 lt.	S - 80 lt.	S - 80 lt.	S - 60 lt.	S - 60 lt.	O - 40 lt.	S - 40 lt.	O - 40 lt.	S - 40 lt.	O - 40 lt.	S - 40 lt.	O - 40 lt.	S - 40 lt.	O - 40 lt.	S - 40 lt.	O - 40 lt.	S - 40 lt.	N	N	N
GRP bow pulpit with electric winch, stainless steel anchor and chain	S	S	O	S	O	S	O	S	N	N	N	N	N	N	N	N	N	N	N	N	N	N	N
Immersion bilge pump	S	S	S	S	S	S	S	S	S	S	S	S	S	S	S	S	S	S	S	S	S	S	S
Hydraulic steering system	S	S	S	S	S	S	S	S	S	S	S	S	S	S	O	O	O	O	O	O	O	N	N

(1) Console complete with: stainless steel lifeline, single-lever remote-control box, ergonomic steering wheel, single cable steering gear (hydraulic steering system for models from D650 to D960), anti-reflection windscreen, door with lock.

For all the range excluding D.540: front seat with cushion and access to locker underneath plus back-rest cushion. For models from D750 to D960: cabin with front access door.

(2) For models D.470, D.500: cushioned seat with hinges and lock for access to stern locker

(3) For models from D540 to D960 (Model D600DS excluded): Driver's seat with cushion and access to lower locker.

S= Standard O= Optional N=Not available S/N= Standard / Not available depending on engine model O/N= Optional for versions with single engine, Not available for versions with double engine



Selva Marine engines come with a five-year limited warranty. Certain conditions and exclusions apply including professional and commercial use.



With an original and energetic line, the 570 Sport model is specially created for those looking for the best. Particular attention has been paid to every detail, from the aft bench that converts into a sundeck to the ergonomic console which integrates all engine controls, as well as the large bow sundeck

and particularly sophisticated overall design. All this is combined with the power of the wide range of exclusive **Selva Marine** engines supplied in the package formula, making this model the undisputed top of the class.



Max length (cm)	Max beam (cm)	Dry weight (kg)	People carrying capacity
570	255	410	9

Model
570 SPORT



The boat is characterised by a sporty and elegant style, with a particular focus on all key details including a grab-rail around the windscreen. The interior space is well distributed and functional. The stern bench is easily converted into an additional sunbed.

TECHNICAL CHARACTERISTICS - EQUIPMENT



Model	570 SPORT
Max length (cm)	570
Internal length (cm)	480
Max width (cm)	255
Internal width (cm)	131
Construction height (cm)	80
Tube diameter (cm)	50÷62
Motor shaft version	1 L
Number of compartments	5
Number of lockers	5
Dry weight ex motor, fittings, liquids (kg)	410
People carrying capacity	9
Max carrying load (kg) (people, standard equipment, engine)	1060
Inflation pressure (atm)	0,2
Max applicable power (kW/hp)	100 (136)
Recommended power (min/max hp)	70 /115
Hull type	Deep-V with rest skids
Hull material	GRP double moulded
Internal hull colour	White
External hull colour	White
Fabric	NEOPRENE - HYPALON, 1300 g/mq
EC standard design category	C

Model	570 SPORT
Pair of paddles	S
Inflating pump	S
Motor installation	S
Complete electrical system	S
Console complete with: stainless-steel lifeline, single-lever remote-control box, ergonomic steering wheel, single cable steering, anti-reflective windscreen, door with lock	S
Semi-erect driving seat with cushion and lower locker	S
Bow sundeck cushions	S
Stern couch convertible into an additional sunbed	S
Folding table behind driver's seat	S
Immersion bilge pump	S
Roll-bar with nav lights and horn	O
Folding stainless steel ladder	O
Auxiliary motor support	O
Sun awning	O
Mooring cover	O
Built-in fuel tank installed in compliance with CE regulations with blower, delivery pipe with water/fuel separating filters and solenoid valves, filling pipe, breather pipe and fuel level gauge	O - 90 lt.
Hydraulic steering system	O

For information on engines in packages with **Sport Line** boats please see the **Selva** outboard engine catalogue.
The data in this table are to be considered as approximate and **Selva Marine** reserves the right to modify the technical characteristics, materials, construction, weights, colours, graphics etc. without any forewarning or obligation.
The specifications given in this table are determined in accordance with the regulations in force at the time of preparation of the catalogue and may have to be modified. Please request confirmation of the data at time of purchase.
Selva S.p.A. reserves the right to modify the technical characteristics, materials, construction, weights, etc. without any forewarning or obligations.

5 OUTBOARD
YEARS
warranty

FOR LEISURE USE ONLY
Subject to terms and conditions
ask your Dealer for more
information

Selva Marine engines come with a five-year limited warranty. Certain conditions and exclusions apply including professional and commercial use.



**Endeavour
Line**

The Endeavour is a 6-meters inflatable boat packaged with **Selva Marine** outboard motors and combines style, comfort and functionality with **Selva** accessibility. The boat incorporates a grey hull and deck with grey and “carbon-fibre look” tubes. It has a big driving console with space for the

latest navigation electronics and a large windshield with steel handrail which guarantees protection for the driver and passengers, while the two double jockey seats and a rear couch, with handles on the tubes, ensure maximum comfort for all types of sea conditions.



Max length (cm)	Max beam (cm)	Dry weight (kg)	People carrying capacity
599	259	480	14

Model
600 ENDEAVOUR



1

1- STERN BENCH

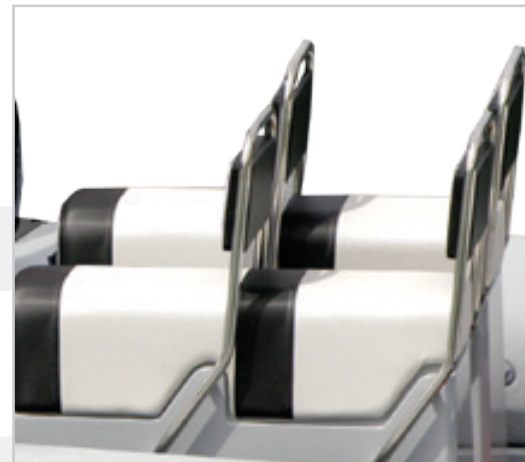
The aft two-colour fabric cushioned bench seat gives easy access to the locker underneath.

2- DOUBLE JOCKEY SEAT

The seats for the pilot and three passengers are jockey-type seats, giving better safety.



3



2

3- WIDE CONSOLE

The console with windscreen is particularly large for enhanced protection of the driver and crew and features a front facing cushioned seat. The console area allows for multiple instrument gauges.

TECHNICAL CHARACTERISTICS - EQUIPMENT

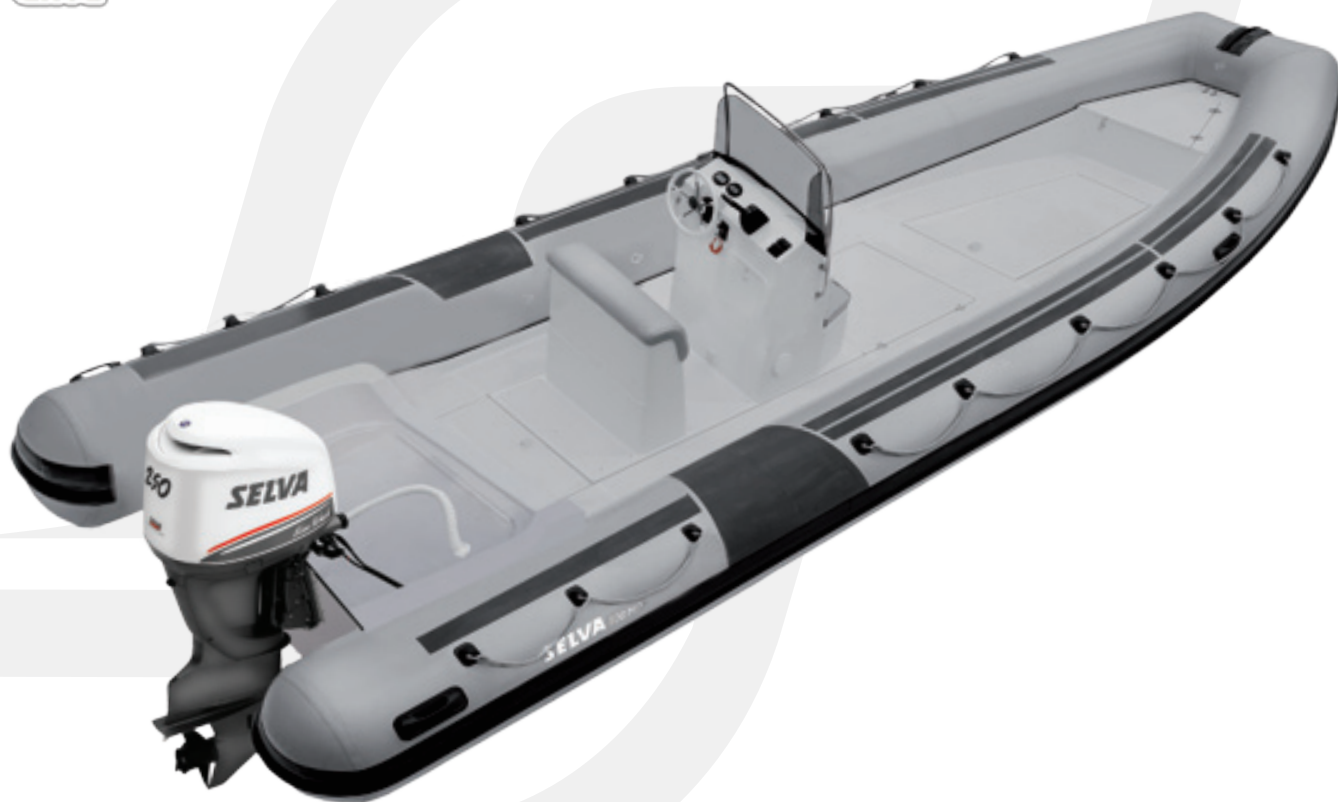
Model	600 ENDEAVOUR
Max length (cm)	599
Internal length (cm)	550
Max width (cm)	259
Internal width (cm)	143
Construction height (cm)	92
Tube diameter (cm)	50÷60
Motor shaft version	1 L
Number of compartments	5
Number of lockers	6
Dry weight ex motor, fittings, liquids (kg)	480
People carrying capacity	14
Max carrying load (kg) (people, standard equipment, engine)	1510
Inflation pressure (atm)	0,2
Max applicable power (kW/hp)	126 (171)
Recommended power (min/max hp)	80 / 115
Hull type	Deep-V with rest skids
Hull material	GRP double moulded
Internal hull colour	Grey
External hull colour	Grey
Fabric	NEOPRENE - HYPALON, 1300 g/mq
EC standard design category	C

Model	600 ENDEAVOUR
Tubes - grey/black "carbon fibre" look	S
Handrail in fabric on tubes	S
Pair of paddles	S
Inflating pump	S
Motor installation	S
Complete electrical system	S
Complete console ⁽¹⁾	S
Steering wheel "Special"	S
Pair of twin jockey seats	S
Engine instrumentation	S
Foldable stern couch	S
Cushions "Endeavour" double-colour	S
GRP stern platform with stainless steel ladder	S
Auxiliary motor support	0
Sun awning	0
Foldable "twin-tube" stainless steel, telescopic, tilting roll-bar with nav lights and horn	0
Mooring cover	0
Built-in fuel tank installed in compliance with CE regulations with blower, delivery pipe with water/fuel separating filters and solenoid valves, filling pipe, breather pipe and fuel level gauge	S - 135 lt.
Immersion bilge pump	S
Hydraulic steering system	0

(1) Console complete with stainless steel lifeline, single-lever remote-control box, ergonomic steering wheel, single cable steering gear, anti-reflection windscreen, door with lock, front seat with cushion and access to locker underneath plus back-rest cushion.

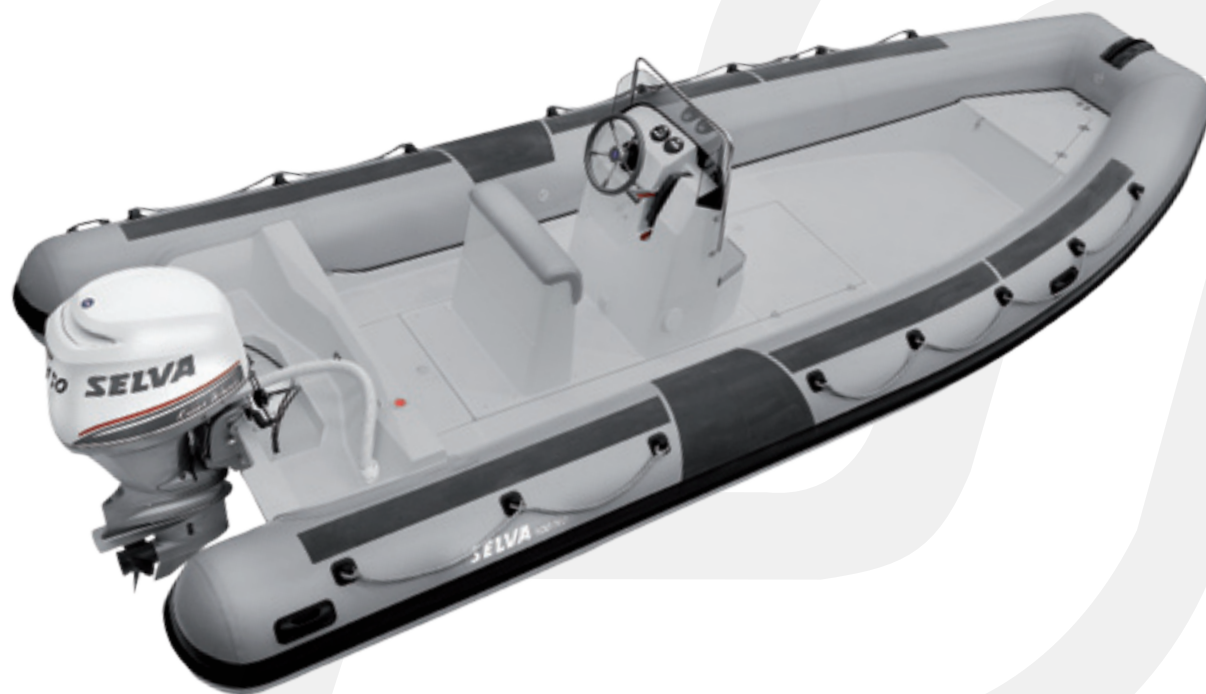
Selva Marine reserves the right to modify the technical characteristics, material, construction, colour, graphics, etc. without any forewarning or obligation.

For information on engines in packages with **Endeavour Line** boats please see the **Selva** outboard engine catalogue. The data in this table are to be considered as approximate and **Selva Marine** reserves the right to modify the technical characteristics, materials, construction, weights, colours, graphics etc. without any forewarning or obligation. The specifications given in this table are determined in accordance with the regulations in force at the time of preparation of the catalogue and may have to be modified. Please request confirmation of the data at time of purchase.



Model
800 PRO

Max length (cm)	Max beam (cm)	Dry weight (kg)	People carrying capacity
798	299	1250	24



Max length (cm)	Max beam (cm)	Dry weight (kg)	People carrying capacity
698	274	650	18

Model
700 PRO



Model
600 PRO

Max length (cm)	Max beam (cm)	Dry weight (kg)	People carrying capacity
599	259	460	14



Max length (cm)	Max beam (cm)	Dry weight (kg)	People carrying capacity
545	246	320	10

Model
550 PRO



1

1- PROTECTION ON TUBES

The top of the tube and the central outer area are protected to allow for intensive use.

2- BOW PROTECTION

A handrail at the bow and a rubber sleeve protect the boat and make it functional and practical in use.



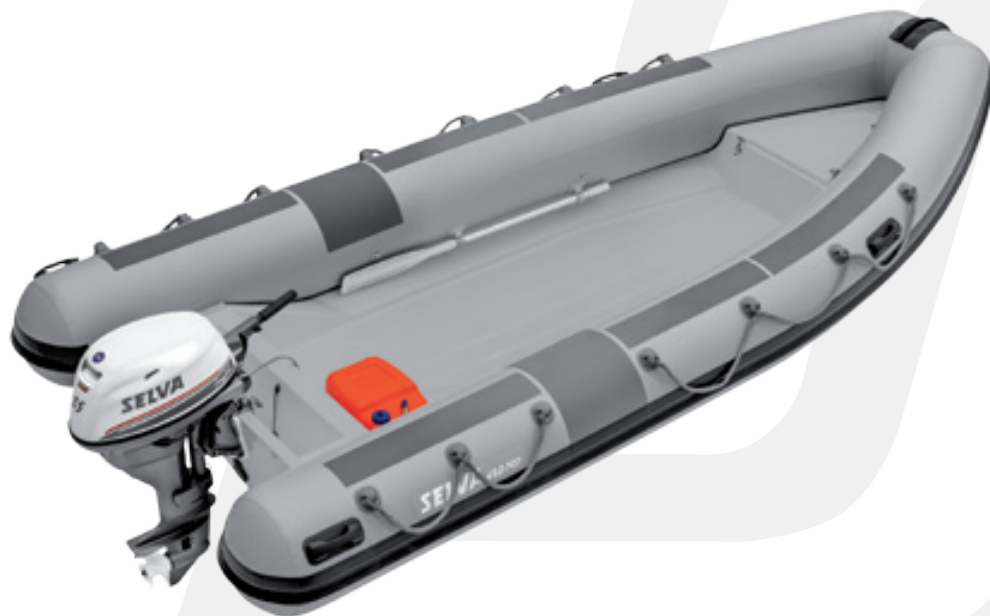
2



3

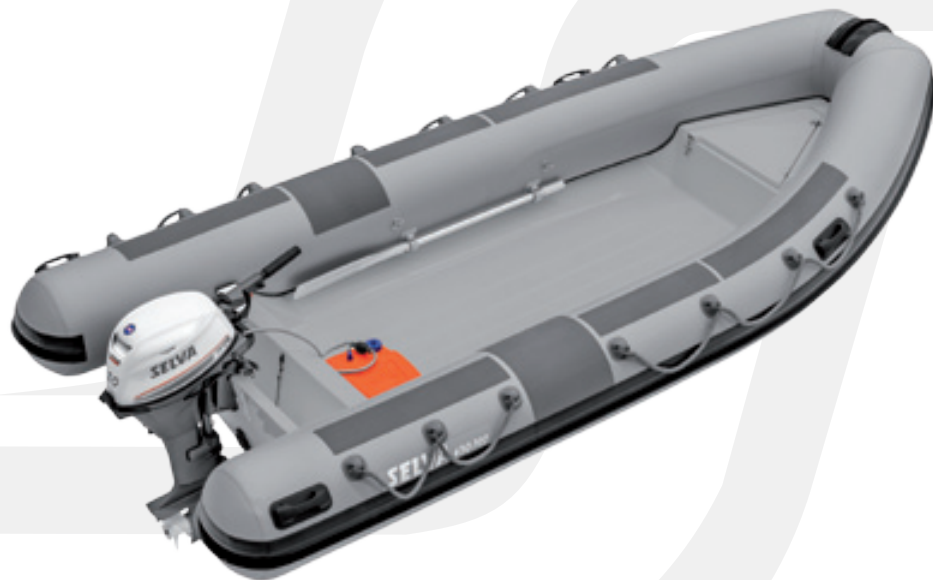
3- JOCKEY SEAT

Optional double seat with stainless steel backrest.



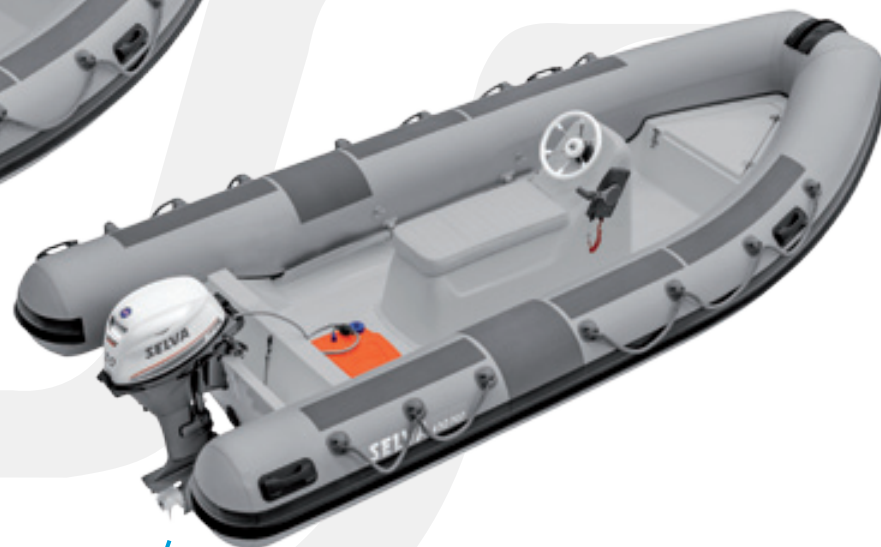
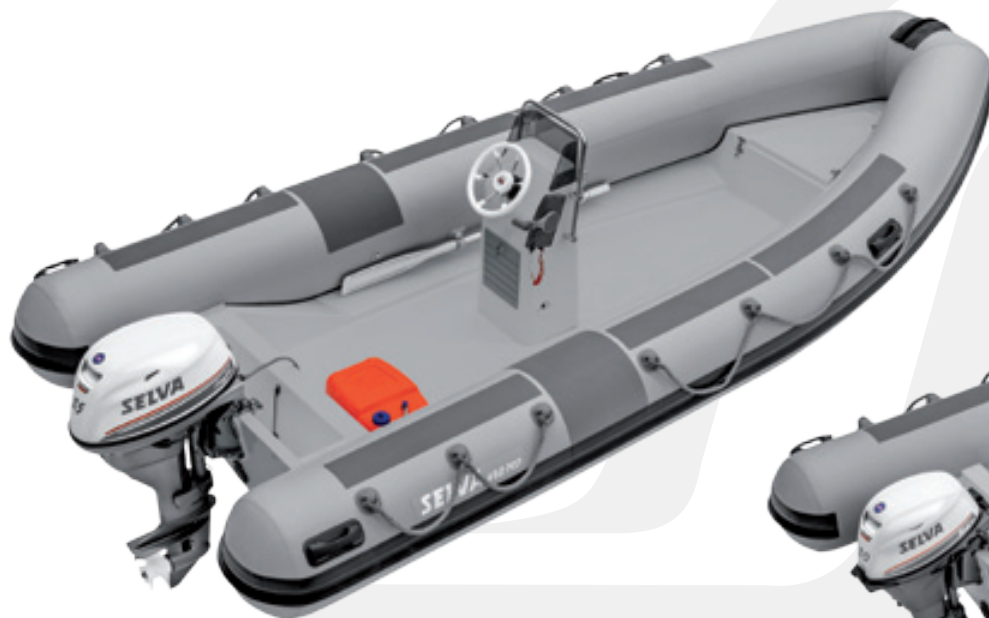
Max length (cm)	Max beam (cm)	Dry weight (kg)	People carrying capacity
484	219	180	8

Model
480 PRO



Model
430 PRO

Max length (cm)	Max beam (cm)	Dry weight (kg)	People carrying capacity
433	198	140	8



VERSION WITH CONSOLE

Model	Max length (cm)	Max beam (cm)	Dry weight (kg)	People carrying capacity
480 PRO	484	219	180	8
430 PRO	433	198	140	8

Version with JOCKEY SEAT

Model
430 PRO

Model
480 PRO

PROFESSIONAL LINE BOATS WITH **SPECIAL EQUIPMENT**

**Professional
Line**





Model	800 PRO	700 PRO	600 PRO	550 PRO	480 PRO	430 PRO
Max length (cm)	798	698	599	545	484	433
Internal length (cm)	700	624	550	468	405	355
Max width (cm)	299	274	259	246	219	198
Internal width (cm)	175	151	143	121	107	100
Construction height (cm)	112	93	92	80	80	80
Tube diameter (cm)	45÷66	50÷60	50÷60	50÷62	51÷57	50÷53
Motor shaft version	1 UL o 2 XL	1 XL	1 L	1 L	1 L	1 L
Number of compartments	6	5	5	5	5	4
Number of lockers	7 / 8	4 / 5	4 / 5	3 / 4	1/2	1/2
Dry weight ex motor, fittings, liquids (kg)	1250	650	460	320	180	140
People carrying capacity	24	18	14	10	8	8
Max carrying load (kg) (people, standard equipment, engine)	2700	1900	1510	1100	850	840
Inflation pressure (atm)	0,2	0,2	0,2	0,2	0,2	0,2
Max applicable power (kW/hp)	2x166 (2x225)	148 (200)	126 (171)	85 (115)	57 (75)	45 (60)
Recommended power (min/max hp)	250	115 / 150	80 / 115	60 / 100	25/60	20/50
Hull type	Deep V with rest skids					
Hull material	Grp Double Moulded					
Internal hull colour	Grey					
External hull colour	Grey					
Fabric	NEOPRENE - HYPALON, 1500 g/mq		NEOPRENE - HYPALON, 1300 g/mq			
EC standard design category	C	C	C	C	C	C

For information on engines in packages with **Professional Line** boats, see outboard engine catalogue.

The data in this table are to be considered as approximate and **Selva Marine** reserves the right to modify the technical characteristics, materials, construction, weights, colours, graphics etc. without any forewarning or obligation.

The specifications given in this table are determined in accordance with the regulations in force at the time of preparation of the catalogue and may have to be modified.

Please request confirmation of the data at time of purchase.

Model	800 PRO	700 PRO	600 PRO	550 PRO	480 PRO	430 PRO
Pair of paddles	S	S	S	S	S	S
Inflating pump	S	S	S	S	S	S
Motor installation	S	S	S	S	S	S
Complete electrical system	S	S	S	S	S/N	S/N
Complete console ^{(1) (2)}	S	S	S	S	S/O	S/O
Roller backrest seat for semi-erect driving with stainless steel support ⁽²⁾	S/N	S/N	S/N	S/N	N	N
Central semi-erect seat in fibreglass with access to internal locker ⁽²⁾	S/N	S/N	S/N	S/N	N	N
Front seat console with cushion and access to locker below	S/N	S	S	S/O	N	N
Fibreglass jockey seat ⁽²⁾	N	N	N	N	S/O	S/O
Rubber fabric anthracite coloured reinforcements on tubes	S	S	S	S	S	S
Rope handrails for double grip also in case of lifting on board	S	S	S	S	S	S
PVC protection on the bow	S	S	S	S	S	S
Engine instrumentation	S	S	S	S	S/O	S/O
Switch panel	S	S	O	O	N	N
Foldable stainless steel ladder	O	O	O	O	N	N
Auxiliary motor support	O	O	O	O	N	N
Sun awning	O	O	O	O	O	O
Mooring cover	O	O	O	O	O	O
Built-in fuel tank installed in compliance with CE regulations with blower, delivery pipe with water/fuel separating filters and solenoid valves, filling pipe, breather pipe and fuel level gauge	S - 347 lt.	S - 200 lt.	S - 135 lt.	O - 90 lt.	N	N
Immersion bilge pump	S	S	S	S	N	N
Hydraulic steering system	S	S	O	O	N	N

(1) For models 800 PRO, 700 PRO, 600 PRO and 550 PRO: console complete with stainless-steel handrail, single-lever remote-control box, ergonomic steering wheel, single-cable steering (hydraulic steering for 700 PRO and 800 PRO), windscreen, door with lock, front seat with cushion and access to locker below plus backrest cushion (excluded 550 PRO with central console). For models 430 PRO and 480 PRO: the console is equipped with a stainless steel handrail, remote-control box, ergonomic steering, single-cable steering, anti-reflective steering, door with lock.

(2) The 800 PRO, 700 PRO, 600 PRO and 550 PRO are available in two versions, to be specified when ordering the boat, with central console and backrest seat in fibreglass or rear console and steel roller backrest seat.

The 430 PRO and 480 PRO are available in three different versions to be specified at time of order: without console with engines for tiller steering, with standard console or with a jockey seat for engines with remote-control box.

Selva Marine reserves the right to modify the technical characteristics, material, construction colour, graphics, etc. without any forewarning or obligation.

5 OUTBOARD
YEARS
warranty

FOR LEISURE USE ONLY
Subject to terms and conditions
see your Dealer for more
information

Selva Marine engines come with a five-year limited warranty. Certain conditions and exclusions apply including professional and commercial use.



The Luxury Tender Line inflatable boat of 3.4 meters features a lot of attention to detail to make it aesthetically elegant with refined lines. It integrates a high elevation hull for superior performance, large tubes and a design that offers space and ergonomics on board leisure and when driving. With high quality construction and materials its designed as “entry level”

for the more sophisticated boater looking for elegance and luxury with maximum comfort and safety: the Gran Turismo of the sea. It is also ideal as a tender for luxury yachts. The GT 342 always offers its best, available in the package format with **Selva Marine** 4-stroke range engines.



Max length (cm)	Max beam (cm)	Dry weight (kg)	People carrying capacity
344	171	125	4 cat C - 5 cat D

Model
GT 342

1



1- SINGLE MOULDED DECK

The internal spaces of the Luxury Tender Line, decks, lockers and console are obtained from a single moulding. It is a feature that makes them stylish, practical and enhances safety and comfort.

2- ERGONOMIC CONSOLE AND GRAB RAILS

The ergonomic design and sophisticated console are specially made to minimise dimensions and allow easy stowage when used as a tender. Grab rails are standard.



3



2

3- BOW MOULDING

Designed with a bow shaped for easy mooring and a practical and safe folding retractable stainless steel cleat for secure mooring.

TECHNICAL CHARACTERISTICS - EQUIPMENT

Model	GT.342
Max length (cm)	344
Internal length (cm)	267
Max width (cm)	171
Internal width (cm)	84
Tubes diameter cm	43
Inflation pressure (atm)	0,2
Number of compartments	3
Motor shaft version	Long
Dry weight ex motor, fittings, liquids (kg)	125
People carrying capacity	4 cat C - 5 cat D
Max carrying load (kg)(people, standard equipment, engine)	475 cat C - 565 cat D
Max applicable power (kW/hp)	29,8 (40)
Recommended power (min/max hp)	20 / 25
Hull type	Deep V with support skids
Hull material	GRP Double Moulded
Internal hull colour	White
External hull colour	White
Fabric	NEOPRENE - HYPALON 1500 g/mq
EC standard design category	C o D

Model	GT.342
Pair of paddles	S
Inflating pump	S
Motor installation	S
Complete electrical system	S
Complete driving console ⁽¹⁾	S
Driving seat with cushion and backrest and access to the locker underneath	S
Central console side seat with cushion	S
Bow seat with cushion and access to the locker underneath	S
Rev counter	S/O
Bilge pump	S
Mooring cover	O
Stainless steel bow grab rail	O
Built-in fuel tank	O - 40 lt.
Repair kit	S

(1) Console complete with stainless steel grab-rail, single-lever remote-control box, ergonomic steering wheel, single-cable steering gear, hatch with access to locker below.

Selva Marine reserves the right to modify the technical characteristics, materials, construction, weights, colours, graphics, etc., without any forewarning or obligations.

For information on engines in packages with **Luxury Tender Line** boats please see the **Selva** outboard engine catalogue. The data in this table are to be considered as approximate and **Selva Marine** reserves the right to modify the technical characteristics, materials, construction, weights, colours, graphics etc. without any forewarning or obligation. The specifications given in this table are determined in accordance with the regulations in force at the time of preparation of the catalogue and may have to be modified. Please request confirmation of the data at time of purchase.



Q8 Oils



www.selvamarine.com



SELVA S.p.A.

Head office and main factory:

Viale dell'Industria, 13 - 23037 Tirano (SO) - Italia

Tel. 0342-702451 - Fax 0342-705361

VAT Number IT 00050830140

Company Registration

SO n. 00050830140 - REA n. 18382

E&OE